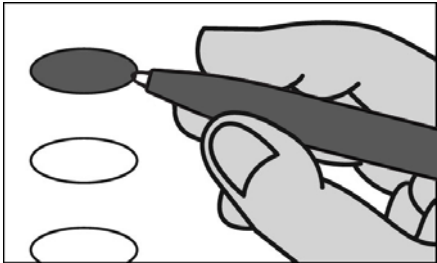


Official Ballot
Partisan Office and Referendum
November 5, 2024

S25

Notice to Voters: If you are voting on Election Day, your ballot must be initialed by two (2) election inspectors. If you are voting absentee, your ballot must be initialed by the municipal clerk or deputy clerk. Your ballot may not be counted without initials (see end of ballot for initials).

General Instructions



If you make a mistake on your ballot or have a question, ask an election inspector for help (absentee voters: contact your municipal clerk).

To vote for a name on the ballot, fill in the oval next to the name like this: ●

To vote for a name that is not on the ballot, write the name on the line marked "write-in" and fill in the oval next to the name like this: ●

Federal

When voting for President and Vice President, you have one of two choices:

- Vote for candidates on one ticket, or
- Write in names of person on both write-in lines

A write-in vote for only a vice presidential candidate **will not be counted**.

President / Vice President
Vote for 1

- ☐ Kamala D. Harris /
Tim Walz
(Democratic)
- ☐ Donald J. Trump /
JD Vance
(Republican)
- ☐ Randall Terry /
Stephen Broden
(Constitution)
- ☐ Chase Russell Oliver /
Mike ter Maat
(Libertarian)
- ☐ Jill Stein /
Rudolph Ware
(Wisconsin Green)
- ☐ Claudia De la Cruz /
Karina Garcia
(Party for Socialism and Liberation)
- ☐ Cornel West /
Melina Abdullah
(Justice for All)
- ☐ Robert F. Kennedy, Jr. /
Nicole Shanahan
(We the People)

☐ _____
write-in (President)

☐ _____
write-in (Vice President)

Congressional

United States Senator
Vote for 1

- ☐ Tammy Baldwin
(Democratic)
- ☐ Eric Hovde
(Republican)
- ☐ Phil Anderson
(Disrupt the Corruption)
- ☐ Thomas Leager
(America First)
- ☐ write-in:

Representative in Congress
District 2
Vote for 1

- ☐ Mark Pocan
(Democratic)
- ☐ Erik Olsen
(Republican)
- ☐ write-in:

Legislative and State

Representative to the Assembly
District 44
Vote for 1

- ☐ Ann Roe
(Democratic)
- ☐ Bruce Danielson
(Republican)
- ☐ write-in:

District Attorney
Vote for 1

- ☐ Jason D. Sanders
(Democratic)
- ☐ write-in:

County

County Clerk
Vote for 1

- ☐ Lisa Tollefson
(Democratic)
- ☐ write-in:

County Treasurer
Vote for 1

- ☐ Michelle L. Roettger
(Democratic)
- ☐ write-in:

County (cont.)

Register of Deeds
Vote for 1

- ☐ Sandy Disrud
(Democratic)
- ☐ write-in:

Referendum

To vote in favor of the question, fill in the oval next to "Yes," like this: ●

To vote against the question, fill in the oval next to "No," like this: ●

State

QUESTION: "Eligibility to vote. Shall section 1 of article III of the constitution, which deals with suffrage, be amended to provide that only a United States citizen age 18 or older who resides in an election district may vote in an election for national, state, or local office or at a statewide or local referendum?"

- ☐ Yes
- ☐ No

Town of La Prairie

Question: "Shall the person holding the office of Town Clerk and the office of Town Treasurer in the Town of La Prairie be appointed by the town board?"

- ☐ Yes
- ☐ No

Referendums
continue
on other side.

Continue voting at top of next column.

Continue voting at top of next column.

Continue voting on back of ballot.

Referendum

To vote in favor of the question, fill in the oval next to "Yes," like this: ●

To vote against the question, fill in the oval next to "No," like this: ●

School District of Janesville

INITIAL RESOLUTION
AUTHORIZING ISSUANCE
OF GENERAL
OBLIGATION BONDS IN
AN AMOUNT NOT TO
EXCEED \$151,800,000

BE IT RESOLVED by the School Board of the School District of Janesville, Rock County, Wisconsin, that there shall be issued, pursuant to Chapter 67, Wisconsin Statutes, General Obligation Bonds in an amount not to exceed \$151,800,000 for the public purpose of paying the cost of a building and improvement program consisting of: District-wide building renovation, site improvements, safety and security updates, capital improvements, HVAC systems upgrades, Americans with Disabilities Act updates, special education support spaces; and acquisition of related fixtures, furnishings and equipment.

QUESTION 1:

Shall the foregoing resolution of the School Board of the School District of Janesville be approved?

☐ Yes

☐ No

Referendum

To vote in favor of the question, fill in the oval next to "Yes," like this: ●

To vote against the question, fill in the oval next to "No," like this: ●

School District of Janesville

RESOLUTION TO EXCEED
REVENUE CAP
COMMENCING WITH THE
2025-26 SCHOOL YEAR
BY AN AMOUNT OF
\$14,500,000

BE IT RESOLVED by the School Board of the School District of Janesville, Rock County, Wisconsin, that the final school district budget shall include an amount not to exceed \$14,500,000 in excess of the revenue limits imposed by Section 121.91 of the Wisconsin Statutes each year for a period of two years on a non-recurring basis, beginning with the 2025-26 school year and ending with the 2026-27 school year, for the purpose of paying the costs of maintaining District class size, student program options and services.

QUESTION 2:

Shall the School Board of the School District of Janesville be authorized to exceed the revenue limit under Section 121.91 of the Wisconsin Statutes beginning with the 2025-26 school year through the 2026-27 school year on a non-recurring basis by an amount of \$14,500,000 each year for the purpose of paying the costs of maintaining District class size, student program options and services as provided in the foregoing resolution?

☐ Yes

☐ No

Official Primary Ballot
Partisan Office and Referendum
November 5, 2024
for

**Town of
La Prairie
Ward 2**

School District of
Janesville

Ballot issued by

Initials of election inspectors

Absentee ballot issued by

Initials of Municipal Clerk or Deputy Clerk

If issued by SVDs, both must initial.

Certification of Voter Assistance

I certify that I marked or read aloud this ballot at the request and direction of a voter who is authorized under Wis. Stat. §6.82 to receive assistance.

Signature of assistor

For Official Use Only

Inspectors: Identify ballots required to be remade:

☐ Overvoted

☐ Damaged

☐ Other

If this is the **Original Ballot**, write the serial number here:

If this is the **Duplicate Ballot**, write the serial number here:

Initials of inspectors who remade ballot